

EXPLODED VIEW & PARTS LISTING

Air Operated Double Diaphragm Pump

Model: DP-80BPT-HD (XDP)

Part No: 854551



To Purchase:

☎ 800-990-7867

✉ sales@yamadapump.com

📍 Find My Rep

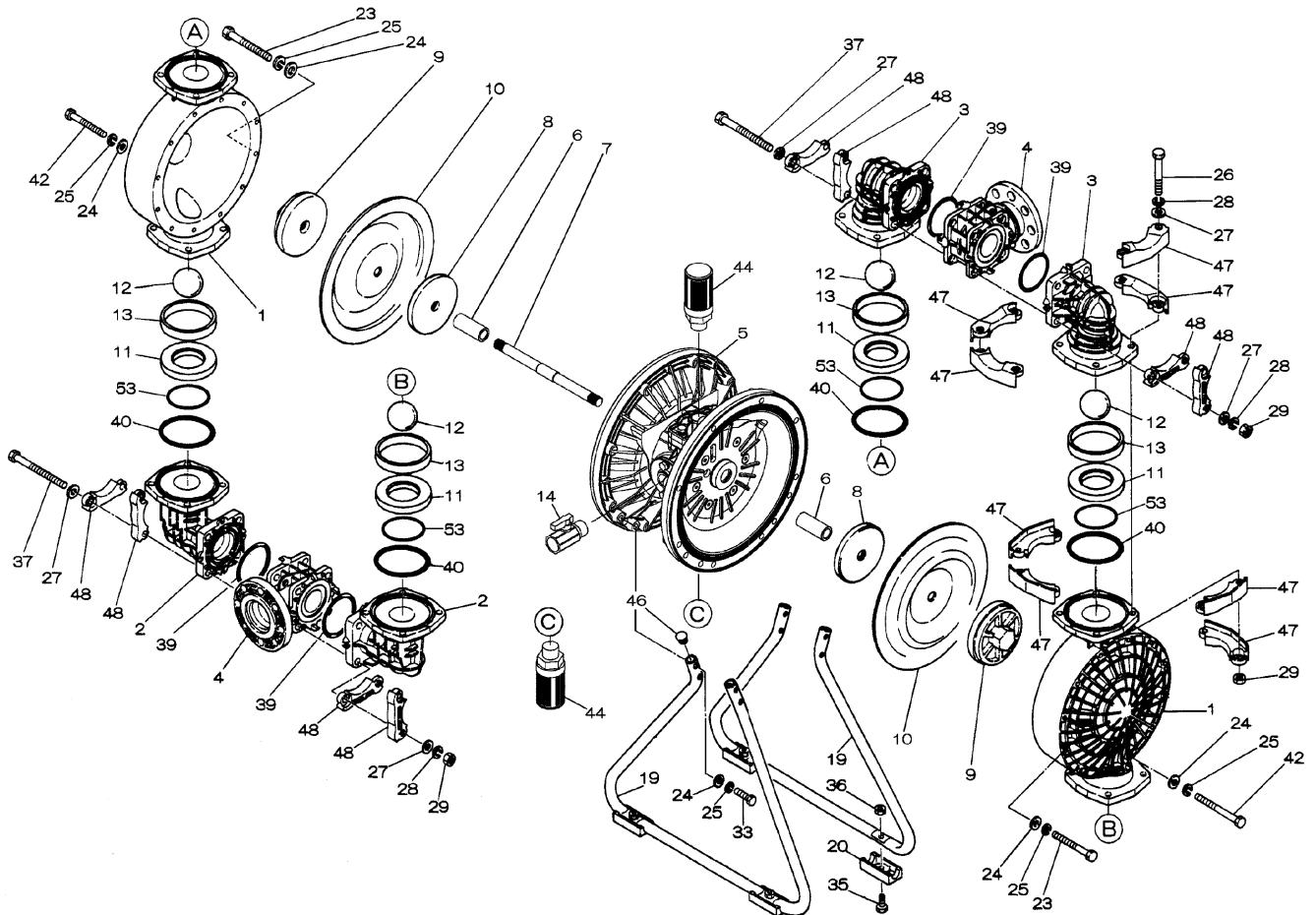
More Information:

▶ YouTube: @yamadapump

🌐 yamadapump.com

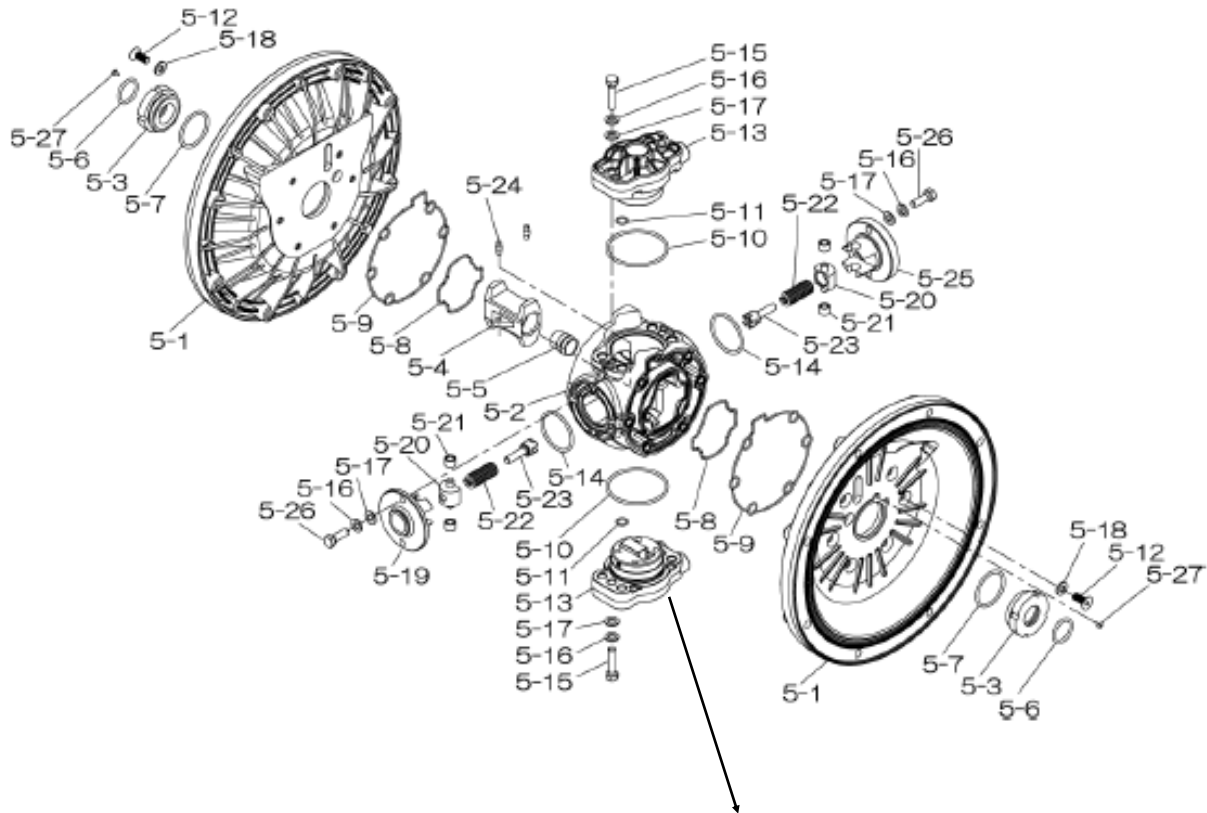
Data Sheets | CAD Drawings | Manuals Literature | BOM | Performance Curves

Trial Program

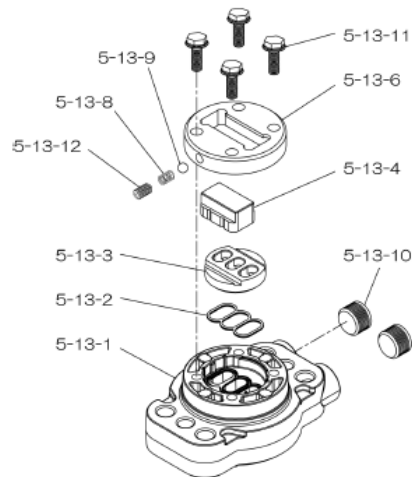


Air Operated Double Diaphragm Pump

804780 Center Body Assembly



804784 Valve Body Assembly



Air Operated Double Diaphragm Pump

REF. No.	PARTS No.	DESCRIPTION	QTY.	REORDER
1	780149	OUT CHAMBER 80PP-2	2	
2	780246	IN MANIFOLD 80PP	2	
3	780152	OUT MANIFOLD 80PP-2	2	
4	780250	CENTER MANIFOLD 80PP	2	
5	804780	CENTER BODY ASSY DP-80-HD	1	
5- 1	716248	AIR CHAMBER	2	
5- 2	716256	BODY	1	
5- 3	773066	THROAT BEARING	2	
5- 4	716214	SHUTTLE (CS)	1	
5- 5	773047	CENTER ROD GUIDE	1	
5- 6	640023	O RING 24.6MM X 3.6MM	2	
5- 7	640133	O RING	2	
5- 8	773040	GASKET	2	
5- 9	773041	GASKET	2	
5-10	640138	O RING (64.5X3.0MM)	2	
5-11	640007	O RING 9.5MM X 2.0MM	8	
5-12	683812	M8X1.25X20 FLAT SOCKET	12	
5-13	804784	VALVE BODY ASSY	2	
5-13- 1	716244	VALVE BODY(H40.50.80)	1	
5-13- 2	773042	GASKET	1	
5-13- 3	716246	SEAT (CS)	1	
5-13- 4	773425	BLOCK	1	
5-13- 6	773426	GUIDE PLATE	1	
5-13- 8	706612	SPRING	1	
5-13- 9	686271	BALL	1	
5-13-10	772934	PLUG 20/25-PP	2	
5-13-11	602300	TAPPING BOLT M6X1X16	4	
5-13-12	610025	HEX. SOCKET HEAD SCREW	1	
5-14	640134	O RING 44.5MM X 3MM	2	
5-15	611153	BOLT M8X1.25X35 HEX FT	4	
5-16	631420	SPRING WASHER M8 ZINC	8	
5-17	631013	WASHER FLAT M8 ZINC DI	8	
5-18	684987	WASHER 40/50/80 NEW	12	
5-19	716249	RETAINER	1	
5-20	713620	SPRING GUIDE	2	
5-21	773067	BUSH	4	
5-22	686303	SPRING	2	
5-23	714446	TRIP ARM	2	
5-24	700231	PIN	2	
5-25	716216	RETAINER	1	
5-26	611149	BOLT M8X1.25X25 FT ZIN	4	
5-27	686337	TAPPING SCREW	2	

REF. No.	PARTS No.	DESCRIPTION	QTY.	REORDER
6	716253	CENTER BUSH	2	
7	716252	CENTER ROD	1	
8	711906	CENTER DISK 80	2	
9	780064	CENTER DISK 80PP	2	
10	770934	DIAPHRAGM 80T	2	
11	772098	VALVE SEAT 80PP-2	4	
12	770694	BALL 80T	4	
13	772099	VALVE SPACER 80PP-2	4	
14	684322	BALL VALVE 50/80 3/4"	1	
19	711927	STAND 80PP	2	
20	771865	FOOT RUBBER 40/50/80 P	4	
23	683543	BOLT M10X1.50X130 HEX	20	
24	631330	WASHER FLAT M10 SS	32	
25	680257	SPRING WASHER M10 SS D	32	
26	621213	BOLT M12X1.75X100 HEX	16	
27	631331	WASHER M12 SS FLAT	32	
28	680607	SPRING WASHER M12 SS	24	
29	628014	NUT M12X1.75 CT SS DIN	24	
33	621179	BOLT M10X1.5X40 HEX FT	8	
35	621149	BOLT M8X1.25X25 HET FT	4	
36	683837	NUT W/ FLANGE M8 X 1.2	4	
37	683544	BOLT M12 X 1.75 X 220	8	
39	684123	O RING 109.6 MM X5.7 M	4	
40	643078	O RING 149.3 MM X5.7 M	4	
41	643015	O-RING	4	
42	683552	BOLT M10X1.5X150 PT SS	4	
44	804697	MUFFLER 20/25PP NEW	2	
46	683641	CAP 40/50/80PP STAND	4	
47	771789	PROTECTOR A 80PP	32	
48	771790	PROTECTOR B 80PP	24	
53	643145	O RING	4	
KIT	K80-MT	LIQUID SIDE		
KIT	K80-AM-DP-HD	AIR MOTOR		

General Tools:

- Socket wrench - 13mm, 17mm, 19mm
- Hexagonal box wrench - 5mm, 6mm
- Open-end wrenches - 17mm
- Phillips head screw driver

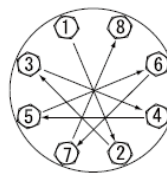
Special Tools:

- Socket (804129) for a guide to remove the throat bearing (sold separately)
- PP Wrench (771868) sold separately. For removing the center disk on BPT

Miscellaneous:

- Assembly Oil - Turbine oil none additional class 1 (equivalent to ISO VG32 grade)
- Nuts - M16 x 1.5
- Thread locker
- Urea grease grade (NLGI) No. 2, Shell Alvania Grease S1

Torque Requirements:



Tightening torque for center rod and out chambers.

- Center Rod 36 ft-lbf {60 N-m}
- Out Chambers 26 ft-lbf {40 N-m}

Tightening torque for manifold retainer bolts.

- BPT 15 ft-lbf {20 N-m}

Customer Notes	
Model #:	_____
Description:	_____
Serial #:	_____
Date Installed:	_____
Department Location:	_____
Tag/Project:	_____